

Farmhouse

RENÉE NANNEMAN



Farmhouse Churns Quilt designed by: **Renée Nanneman**

Quilt Size: **62" x 82 "** • Skill Level: **Intermediate**

Farmhouse Churns Quilt

Introducing Andover Fabrics new collection: **FARMHOUSE** by Renée Nanneman

Quilt designed by Renée Nanneman

Quilt finishes 62" x 82"

12 Big Blocks: 18" x 18"

96 Churn Dash Blocks: 4½" x 4½"

Traditional Churn Dash blocks frame the pretty print that is based on a salvaged wallpaper board from an early 1900 Missouri farmhouse. The soothing neutral tones of the original wallpaper have been recreated with an ever-so-light texture across the design for a slightly worn and loved appearance. The small blocks are made with easy half-square triangle units.

Cutting Directions

Note: Read assembly directions before cutting patches. All measurements are cut sizes and include ¼" seam allowances. A fat ⅓ is a 9" x 20"-22" cut of fabric. A fat ¼ is an 18" x 20"-22" cut. WOF designates the width of fabric from selvedge to selvedge (approximately 42" wide).

Cutting for ONE Churn Dash Block

Light Fabric

Cut (2) squares 2⅜" (or 2½") for Half-Square Triangles (HST). Read Step 1.

Cut (4) rectangles 1¼" x 2"

Colored Fabric

Cut (2) squares 2⅜" (or 2½") for HST

Cut (4) rectangles 1¼" x 2"

Center Fabric

Cut (1) square 2"

Cutting for ONE Big Block

Make 8 Churn Dash Blocks

Cut (4) corner squares 5"

Fabric A: Cut (1) center square 9½"

Cutting for Entire Quilt

Stripe (I)

Cut (31) sashes 2½" x 18½", cut crosswise

Gray (A)

Cut (12) squares 9½" for Big Block centers

Cream (Z)

Cut (80) squares 2⅜" (or 2½") for HST

Cut (160) rectangles 1¼" x 2" for Churn Dash

Tan (P)

Cut (50) squares 2⅜" (or 2½") for HST

Cut (100) rectangles 1¼" x 2" for Churn Dash

Making the Quilt

When making the blocks, refer to these labels and the list of fabrics on the last page of the pattern.

A 11354-KN	B 1354-N	C 1354-R	D 1354-T
E 1355-L	F 1355-T	G 1355-N	H 1356-NR
I 1356-NT	J 1357-N	K 1357-R	L 1357-T
M 1358-N	N 1358-R	O 1358-T	P 1359-N
Q 1359-NL	R 1359-R	S 1359-T	T 1360-N
U 1360-R	V 1360-T	W 1361-NE	X 1361-NT
Y 1361-NY	Z 1362-L	YY 1362-N	ZZ 1362-NY

Fabric Requirements	Yardage	Fabric
Stripe sashes	1½ yards	I
Gray set	1 yard	A
Cream backgrd.	¾ yard	Z
Tan backgrd.	½ yard	P
Red set	⅔ yard	C
18 Fat ¼ logs	fat ¼ each	
	Fabrics D, E, G, J, K, L, M, N, O, Q, R, T, U V, W, X, Y, YY	
5 Fat ⅓ blocks	fat ⅓ each	
	B, F, H, S, ZZ	
Binding	⅝ yard	X
Backing	5 yards	E

Red (C)

Cut (16) squares 5" for Big Block corners

3 Fat ¼ (D, E, G) From each:

Cut (8) squares 5" for Big Block corners

3 Fat ¼ (M, N, O) From each:

Cut (16) squares 2⅜" (or 2½") for HST

Cut (32) rectangles 1¼" x 2" for Churn Dash

2 Fat ¼ (Q, R) From each:

Cut (14) squares 2⅜" (or 2½") for HST

Cut (28) rectangles 1¼" x 2" for Churn Dash

2 Fat ⅓ (F, B) From each:

Cut (4) squares 5" for Big Block corners

Fabric H

Cut (12) squares 2" for Churn Dash centers

Fabric J

Cut (20) squares 2⅜" (or 2½") for HST

Cut (40) rectangles 1¼" x 2" for Churn Dash

Farmhouse Churns Quilt

Fabric K

Cut (16) squares $2\frac{3}{8}$ " (or $2\frac{1}{2}$ ") for HST
 Cut (8) squares 2" for Churn Dash centers
 Cut (32) rectangles $1\frac{1}{4}$ " x 2" for Churn Dash

Fabric L

Cut (24) squares $2\frac{3}{8}$ " (or $2\frac{1}{2}$ ") for HST
 Cut (48) rectangles $1\frac{1}{4}$ " x 2" for Churn Dash

Fabric S

Cut (20) squares $2\frac{1}{2}$ " for setting squares

Fabric T

Cut (24) squares $2\frac{3}{8}$ " (or $2\frac{1}{2}$ ") for HST
 Cut (48) rectangles $1\frac{1}{4}$ " x 2" for Churn Dash

Fabric U

Cut (16) squares $2\frac{3}{8}$ " (or $2\frac{1}{2}$ ") for HST
 Cut (7) squares 2" for Churn Dash centers
 Cut (32) rectangles $1\frac{1}{4}$ " x 2" for Churn Dash

Fabric V

Cut (22) squares $2\frac{3}{8}$ " (or $2\frac{1}{2}$ ") for HST
 Cut (44) rectangles $1\frac{1}{4}$ " x 2" for Churn Dash

Fabric W

Cut (12) squares $2\frac{3}{8}$ " (or $2\frac{1}{2}$ ") for HST
 Cut (24) rectangles $1\frac{1}{4}$ " x 2" for Churn Dash

Fabric X

Cut (16) squares $2\frac{3}{8}$ " (or $2\frac{1}{2}$ ") for HST
 Cut (3) squares 2" for Churn Dash centers
 Cut (32) rectangles $1\frac{1}{4}$ " x 2" for Churn Dash

Fabric Y

Cut (22) squares $2\frac{3}{8}$ " (or $2\frac{1}{2}$ ") for HST
 Cut (44) rectangles $1\frac{1}{4}$ " x 2" for Churn Dash

Fabric YY

Cut (62) squares 2" for Churn Dash centers

Fabric ZZ

Cut (6) squares $2\frac{3}{8}$ " (or $2\frac{1}{2}$ ") for HST
 Cut (4) squares 2" for Churn Dash centers
 Cut (12) rectangles $1\frac{1}{4}$ " x 2" for Churn Dash

Binding

Cut (8) strips $2\frac{1}{2}$ " x WOF for binding

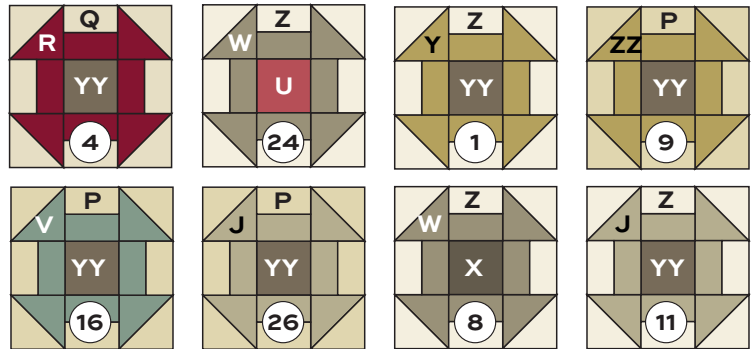
Backing

Cut (2) lengths 36" x 92", pieced to fit quilt top with overlap on all sides

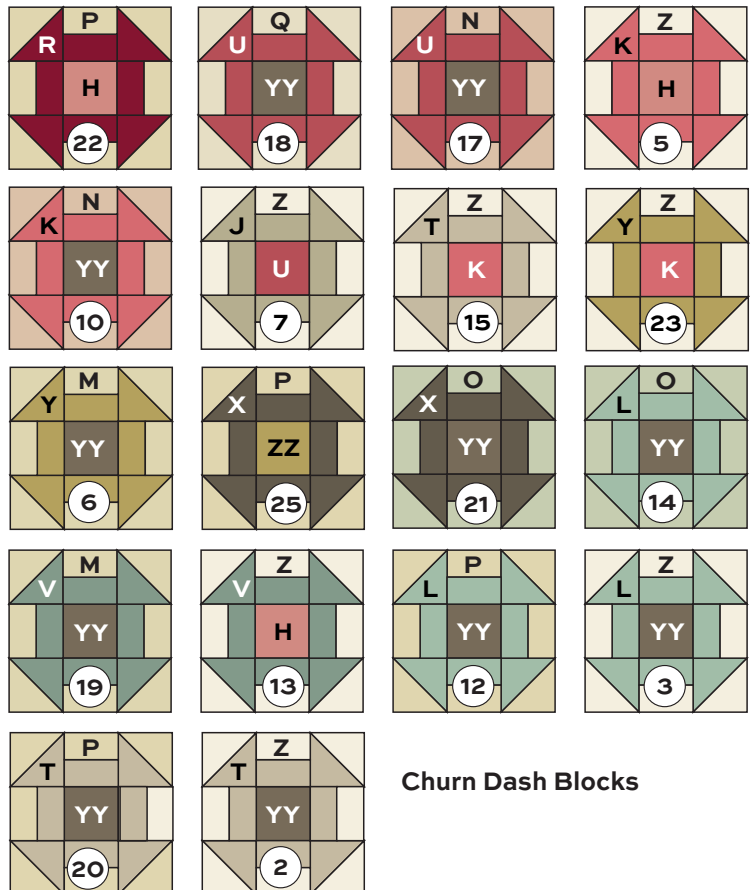
Making the Quilt

- The quilt is made with multiple parts. Refer to the Churn Dash Block diagrams to gather the 3 fabrics needed for each. Or, feel free to arrange the fabrics in any combination you desire, using more or less of the fabrics as you see fit. We suggest that you cut patches for one Churn Dash and complete it before you begin another. This will prevent any errors in fabric placement.

Make 3



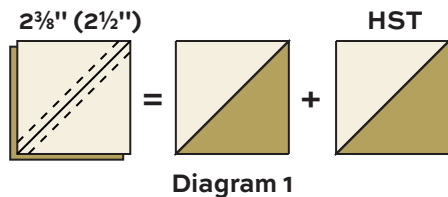
Make 4



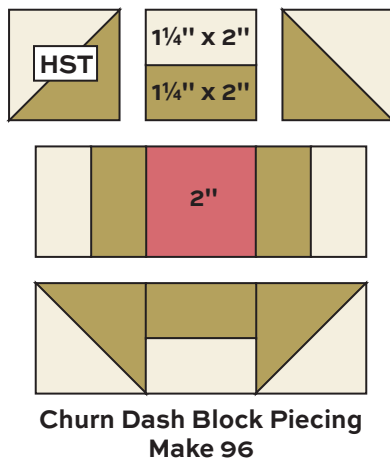
Churn Dash Blocks

Farmhouse Churns Quilt

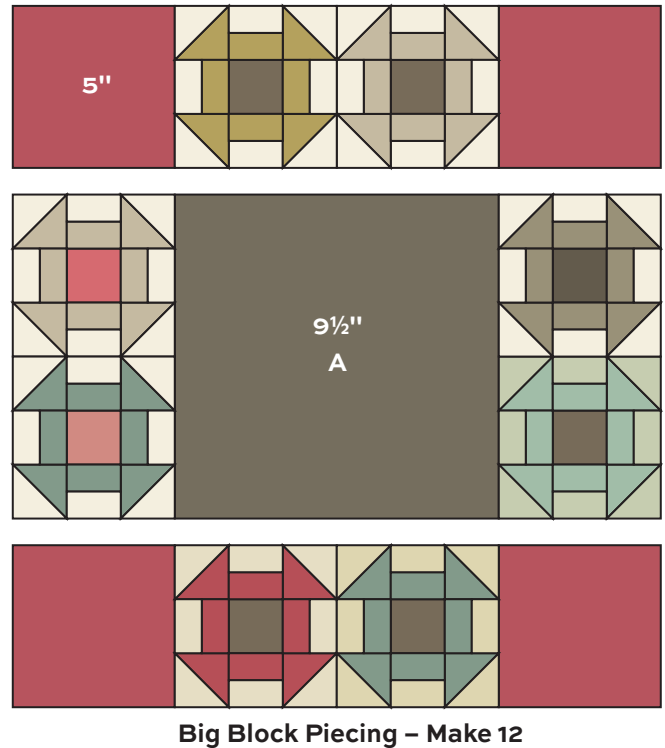
2. The Churn Dash Blocks are made with half-square triangles (HST). Use your favorite method to make HST that *finish* 1½", or follow these directions. Fabric squares cut 2⅜" will be trimmed after stitching. Cut the squares 2⅜" if you do not wish to trim later. Choose the 2 fabrics needed for the HST in a Churn Dash. Draw a diagonal line on the wrong side of the lighter 2⅜" (or 2½") squares. With right sides together, position the marked square on top of the appropriate colored square. Stitch ¼" on each side of the diagonal line (Diagram 1). Cut apart on the drawn line. Press the seam allowance toward the darker fabric. Trim the HST to 2" square if needed. Make 4 HST alike for each little Churn Dash Block.



3. Refer to Churn Dash Block Piecing. Sew the 1¼" x 2" strips in pairs as shown. Each side unit should measure 2" x 2" square. Arrange the HST, 4 side units, and the 2" center square in rows as shown. Join the parts, and then join the rows. The Churn Dash should measure 5" from edge to edge. Repeat these directions to make a total of 96 Churn Dash Blocks.



4. Referring to the Big Block Piecing, arrange 8 Churn Dash, 4 corner 5" squares, and 1 Fabric A center square as shown. Join the parts to make 3 rows, and then join the rows. The block should measure 18½" from raw edge to edge. If it does not, adjust your stitching and pressing techniques.

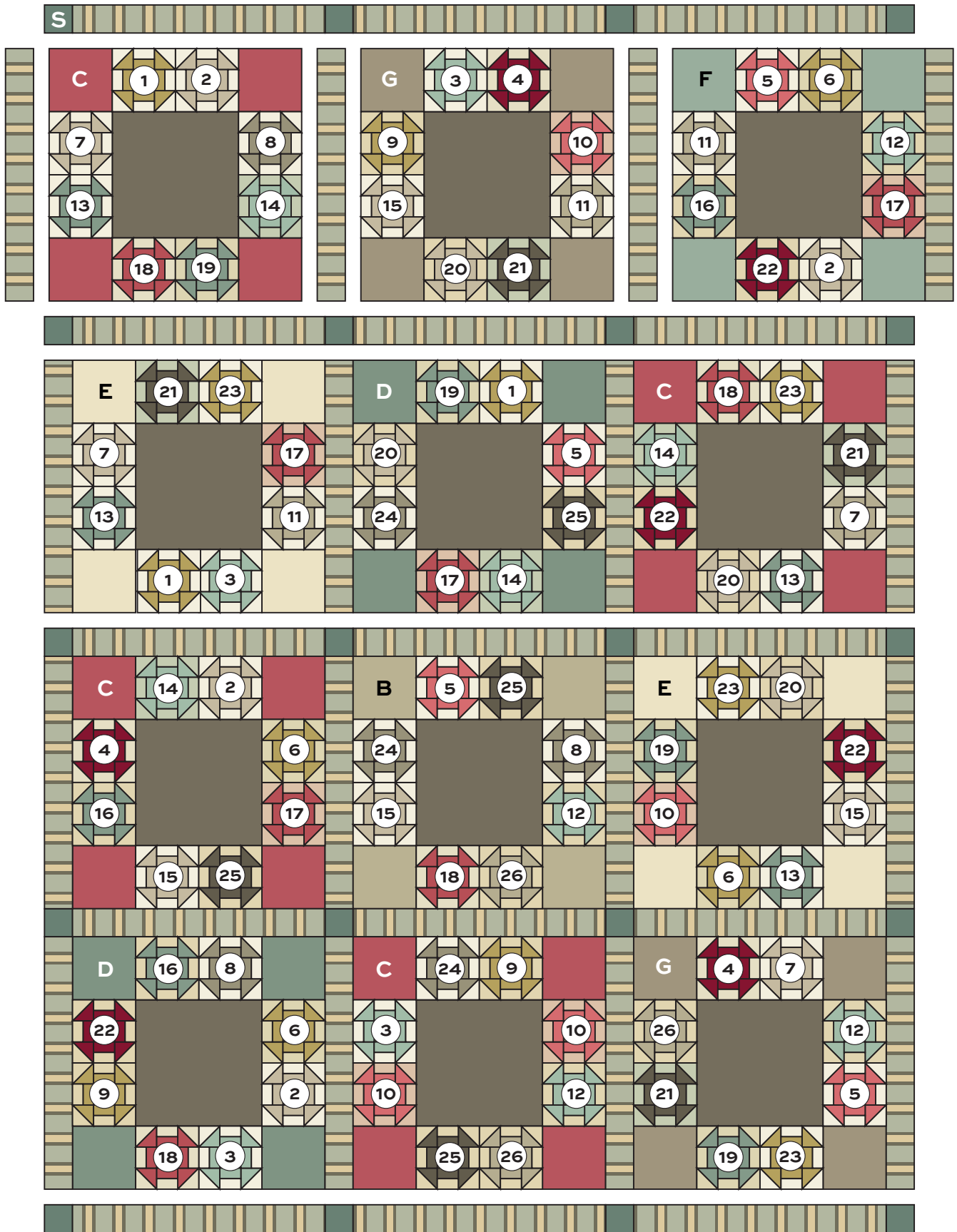


5. Refer to the Quilt Assembly. Arrange and join 3 Big Blocks and 4 Fabric I sashes to make a block row. Make 4 like this. To make a sash row, join 3 sashes alternately with 4 Fabric S setting squares. Join to make 5 sash rows. Finally, join the rows as shown.

Finishing the Quilt

6. Layer the quilt with batting and backing and baste. Quilt in the ditch around sashes and patches. Quilt around the printed motifs in the center Fabric A squares. Bind to finish the quilt.

Farmhouse Churns Quilt



Quilt Assembly

Farmhouse RENÉE NANNEMAN



1354-KN



1354-N



1354-R



1354-T



1355-L



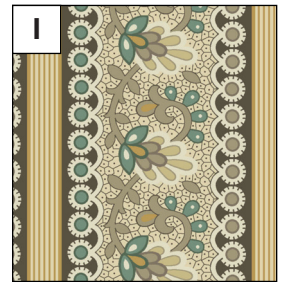
1355-T



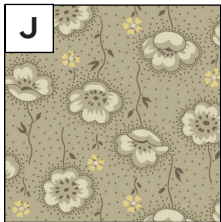
1355-N



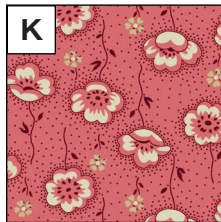
1356-NR



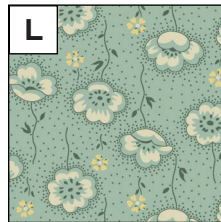
1356-NT



1357-N



1357-R



1357-T



1358-N



1358-R



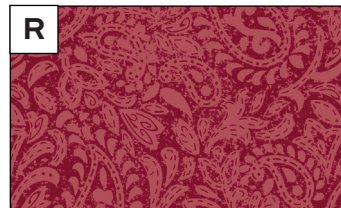
1358-T



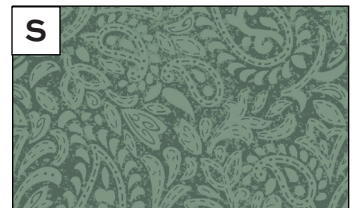
1359-N



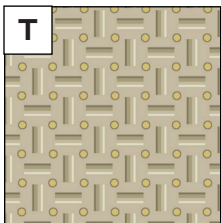
1359-NL



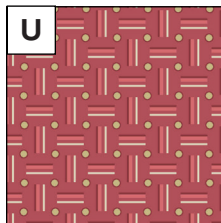
1359-R



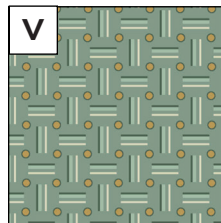
1359-T



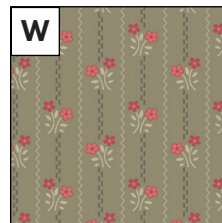
1360-N



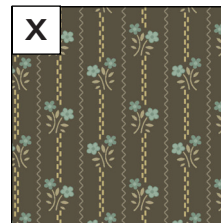
1360-R



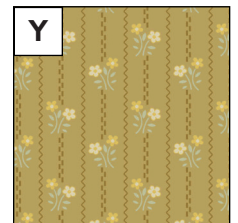
1360-T



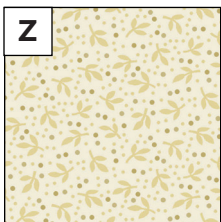
1361-NE



1361-NT



1361-NY



1362-L



1362-N



1362-NY

All fabrics are used in quilt pattern.
Fabrics shown are 50% of actual size.

Free Pattern Download Available

1384 Broadway, 24th Floor, New York, NY 10018

Tel. (800) 223-5678 • andoverfabrics.com

4/15/24